



DIXIE PRECAST, INC.

2950 ANGELETTE DRIVE, AUSTELL, GEORGIA 30106

(770) 944-1930 Fax (770) 944-9136

www.dixieprecast.com

DIXIE PRECAST

THIS PRINT REPRESENTS A PROPRIETARY PRODUCT AND IS OWNED BY DIXIE PRECAST INC. FOR THE USE OF ITS CUSTOMERS. IS NOT TO BE CONVEYED, NOR COPIED BY ANY OTHER PARTY WITHOUT THE EXPRESS WRITTEN APPROVAL OF THE OWNER.

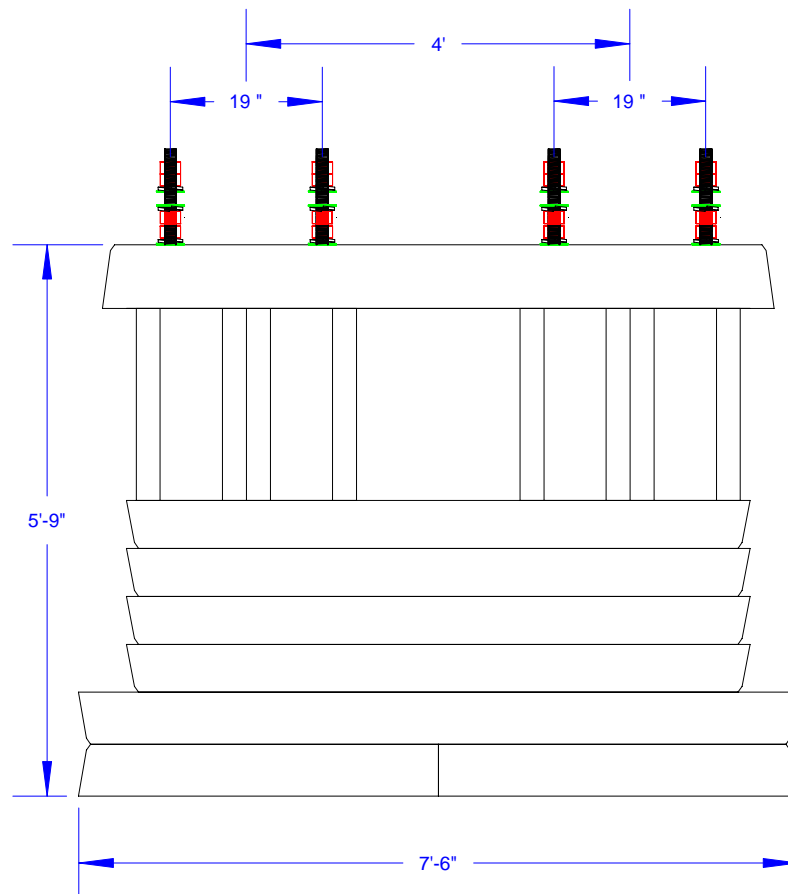
THIS PRODUCT IS COVERED BY ONE OR MORE PATENTS

PATENTED

Bill of Material

| Qty | Description |
|-----|------------------------------------|
| 2 | DP-16B Mk. BASE |
| 2 | DP-16B Mk. # 2 |
| 4 | DP-16B # 3 |
| 4 | 24" Spider, 19" X 19" Bolt Spacing |
| 1 | DP-16B Mk # TOP |
| 16 | 1 1/2" x 80" Bolts & Hardware |
| | 3 Nuts, LW, & FW Each Bolt |

Total Weight: 32,000 lbs



ELEVATION VIEW

DP-16B Wayside Cantilever Foundation

Elevation View